



International and Comparative Studies in Adult Education & Lifelong Learning

for Students & Practitioners

ERASMUS+ STRATEGIC PARTNERSHIP

INTALL is a ERASMUS+ partnership of **eight European universities** and **two major European practice institutions** in the field of adult education and lifelong learning. It builds up a bridge between academic learning and practice in adult and continuing education.

INTALL DEVELOPMENTS

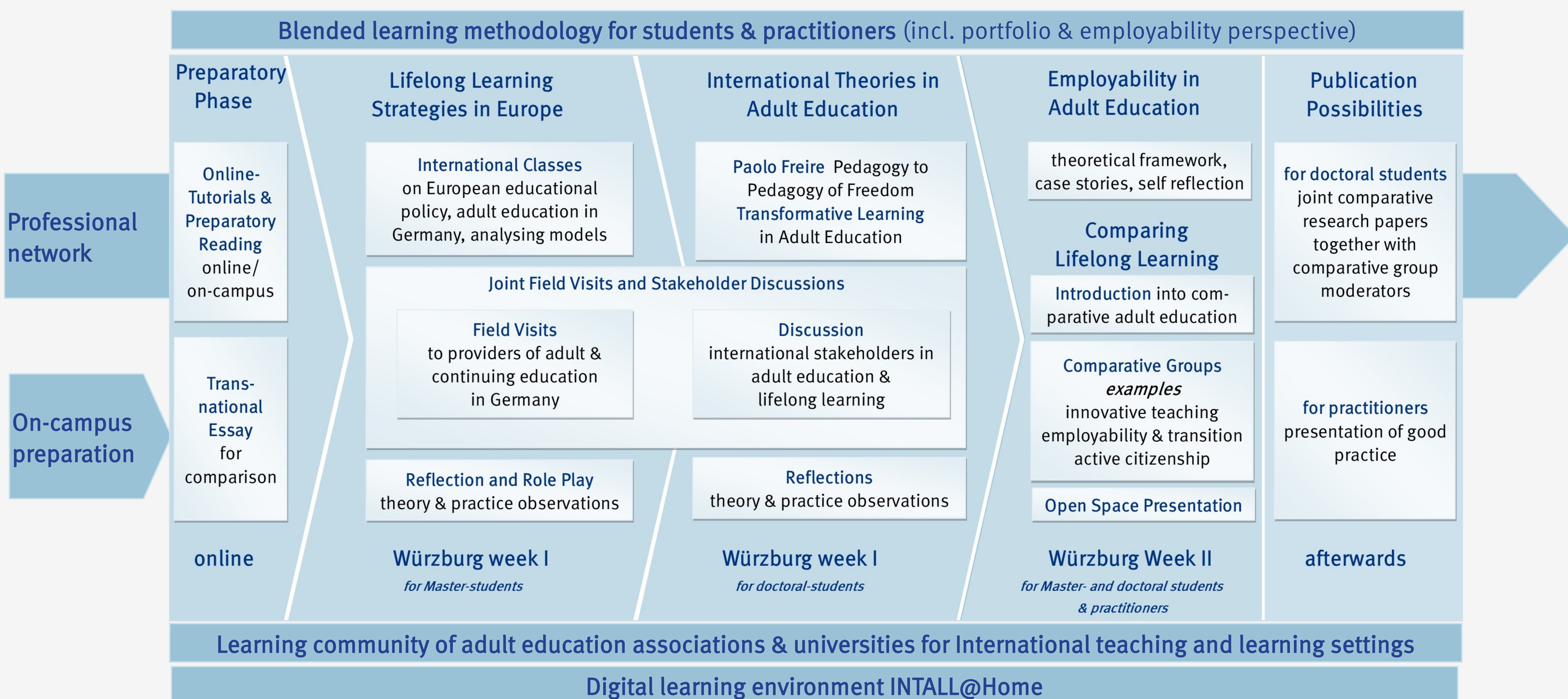
A **learning programme** for students & practitioners, incl. a Winter School. A **learning community** for university and practice teachers in adult and continuing education to collect international teaching/learning settings. A portfolio method to **strengthen employability** in adult education and lifelong learning. A **digital learning offer** for self-directed online learning.

PARTICIPATION OF STUDENTS & PRACTITIONERS

Master's students, doctoral students and practitioners in adult education and lifelong learning are invited to join a two-week Winter School in Würzburg. In the first week, students learn about **international and European policies in adult education and lifelong learning**, deepening their knowledge about international theories or theoretical thinkers in adult education. In the second week, practitioners join the programme. Together, students and practitioners work on their **science-related employability skills** and conduct their own **international comparative study**.

WINTER SCHOOL DATES

4–15 February 2019, 3–14 February 2020 and 1–12 February 2021



WINTER SCHOOLS

In November an **on-campus and online preparation** starts for students and practitioners. Students submit a **transnational essay** by mid-January. Practitioners prepare a **good practice**. All participants meet in February for a **two-week Winter School in Würzburg**.

TARGET GROUP

Master's and doctoral students studying a subject related to adult education and/or lifelong learning. **Practitioners in Adult and Continuing Education** who have worked in adult education or lifelong learning for min. one year. INTALL focuses on individuals doing **educational work** on the **micro level** (teaching, guiding), **meso level** (management of adult education including tasks as needs analysis, educational programme development etc.) and **macro level** (advocacy on governmental level). **Researchers and university staff** with research focus on adult education and/or lifelong learning can also participate.

PROFESSIONAL NETWORK

INTALL offers a **professional network** that allows **students and practitioners** to stay in contact with each other and find the partners for their transnational work. URL: www.linkedin.com/groups/8445381/

FROM RESEARCH TO PUBLICATION

Doctoral students can pursue their comparison commenced during the Winter School in an academic publication. By the end of the Winter School, groups will be formed to enable **continued work on the comparisons**. Publications will be **supervised by international experts** on the selected topics. They will be **reviewed and published** in an **internationally edited volume**.

PARTNERS

Julius-Maximilian University Würzburg, Germany (Coordination)
Dublin City University, Ireland
DVV International, Germany
European Association for the Education of Adults
Università degli Studi di Firenze, Italy
Helmut-Schmidt University Hamburg, Germany
Universidade de Lisboa, Portugal
Univerza v Ljubljani, Slovenia
Università degli Studi di Padova, Italy
Pécsi Tudományegyetem, Hungary

FURTHER INFORMATION: [GO.UNIWUE.DE/INTALL](https://go.uniwue.de/intall)



This project (2018-1-DE01-KA203-004272) is funded with support from the European Commission. This communication reflects the views only of the author, and the Commission cannot be held responsible for any use which may be made of the information contained therein.