

The strategic partnership COMPALL is developing a **joint module** in “Comparative studies in adult and lifelong learning“, which will be offered in study programmes related to adult education and lifelong learning.

The joint module includes a **preparatory phase** (online and/or on-campus), and a **two-week intensive phase** at Campus Würzburg/Germany. There is also an opportunity for doctoral students and colleagues to **publish their work**. Furthermore, COMPALL is developing an **online network for young graduates and researchers** in adult education and lifelong learning.

HOW TO JOIN?

- Invite your students studying the COMPALL-module and becoming exchange student at one of the partner universities
- Recognise COMPALL-studies within your study programme
- Join our professional network for adult education and lifelong learning on LinkedIn
- Visit one of our public events to discuss with us the use of COMPALL-results within your studies
- Join us as an international expert for teaching the intensive programme each year in February
- Use the information tool and COMPALL-publication for teaching in your home university

Contact

Julius-Maximilian University Würzburg
Professorship for Adult and Continuing Education
Prof. Dr. Regina Egetenmeyer
Oswald-Külpe-Weg 82
97074 Würzburg, Germany
Phone: +49 (0) 931 3186193
compall@uni-wuerzburg.de
www.hw.uni-wuerzburg.de/compall

Julius-Maximilians-Universität
Würzburg, Germany (Coordination)
Prof. Dr. Regina Egetenmeyer

Universidade de Lisboa, Portugal
Prof. Dr. Paula Guimarães

Università degli Studi di Padova,
Italy
Prof. Dr. Monica Fedeli

Università degli Studi di Firenze,
Italy
Prof. Dr. Vanna Boffo

Helmut-Schmidt-Universität
Hamburg, Germany
Prof. Dr. Sabine Schmidt-Lauff

Pécsi Tudományegyetem, Hungary
Prof. Dr. Balázs Németh

Aarhus Universitet, Denmark
Prof. Dr. Søren Ehlers

Partner Universities



Comparative studies in adult education and lifelong learning

COMPALL: 2015 - 2018

ERASMUS+ Strategic partnership



cofinanced by the European Commission
(project number: 2015-1-DE01-KA203)



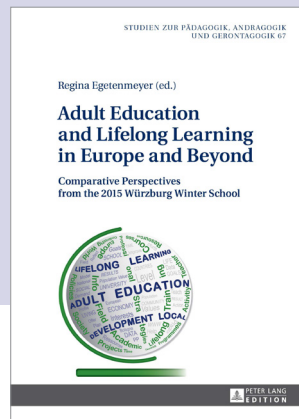
JOINT MODULE

The COMPALL joint module starts each year with **registration** by the end of October. This is followed by on-campus **preparation** (by partner universities) or online-preparation (students outside the partner universities). Each participant submits a **transnational essay** on a selected aspect of adult education and lifelong learning by mid January.

In February, all participants meet for a two-week intensive programme at the Würzburg Winter School. During the Winter School, **international policies** in adult and lifelong learning are discussed, **field visits** to adult and continuing education providers are arranged, and **comparisons made between selected issues** in the field of adult and lifelong learning.

FROM TEACHING TO RESEARCH

COMPALL is offering doctoral students the exclusive chance to pursue their comparative work commenced during the Winter School. Guided by international experts, the results will be published in a volume edited internationally.



PUBLIC EVENTS

COMPALL is offering **annual public events**. International experts in adult education and lifelong learning are invited to discuss with us the use of COMPALL-results along with further development. Please note the following dates:

- **Intensive workshop:** Comparative skills in adult and lifelong learning (11. - 12. February 2016)
- **International seminar:** Joint module in comparative studies in adult and lifelong learning (16. - 18. February 2017)
- **Transnational conference:** Comparative analysis in adult and lifelong learning (15. - 17. February 2018)

Further information and registration by October:
www.hw.uni-wuerzburg.de/compall

PROFESSIONAL NETWORK

COMPALL is developing a **professional online network**, which allows networking between young graduates and researchers in adult and lifelong learning. LinkedIn facilitates interaction with **fellow students**, the investigation of academics and professional **profiles**, and the establishment of the **best partners** for transnational studies and research. In a public network, current international study and research opportunities in adult and lifelong learning will be disseminated. The COMPALL network also allows publication of **international vacancies**.

Be a part of our community:
www.linkedin.com/groups/8445381/

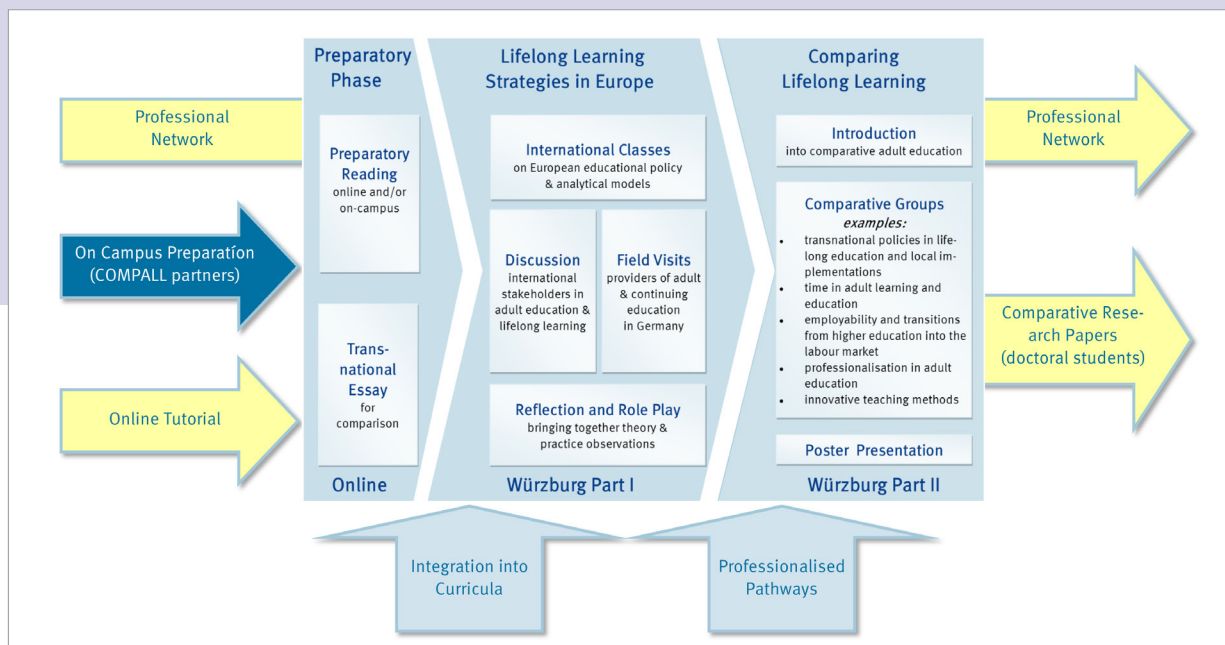


INFORMATION TOOL

Both before and after your transnational studies, the COMPALL information tool provides information for studies in international and comparative adult education.

GO TO

www.hw.uni-wuerzburg.de/compall/



Joint Module in Comparative Studies in Adult Education and Lifelong Learning